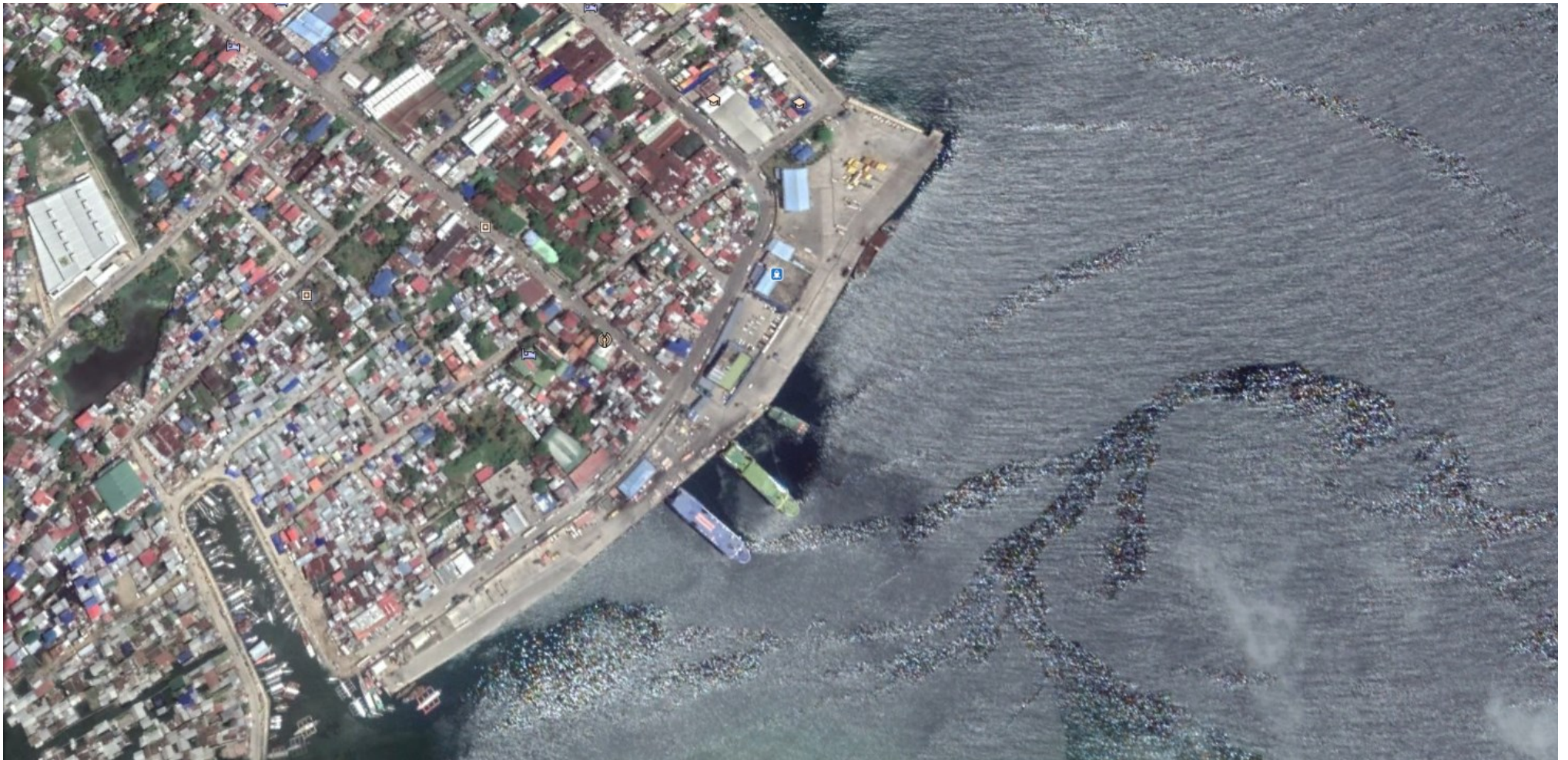


# PORT OF SURIGAO

Port Management Office of Surigao

## PORT PROFILE:

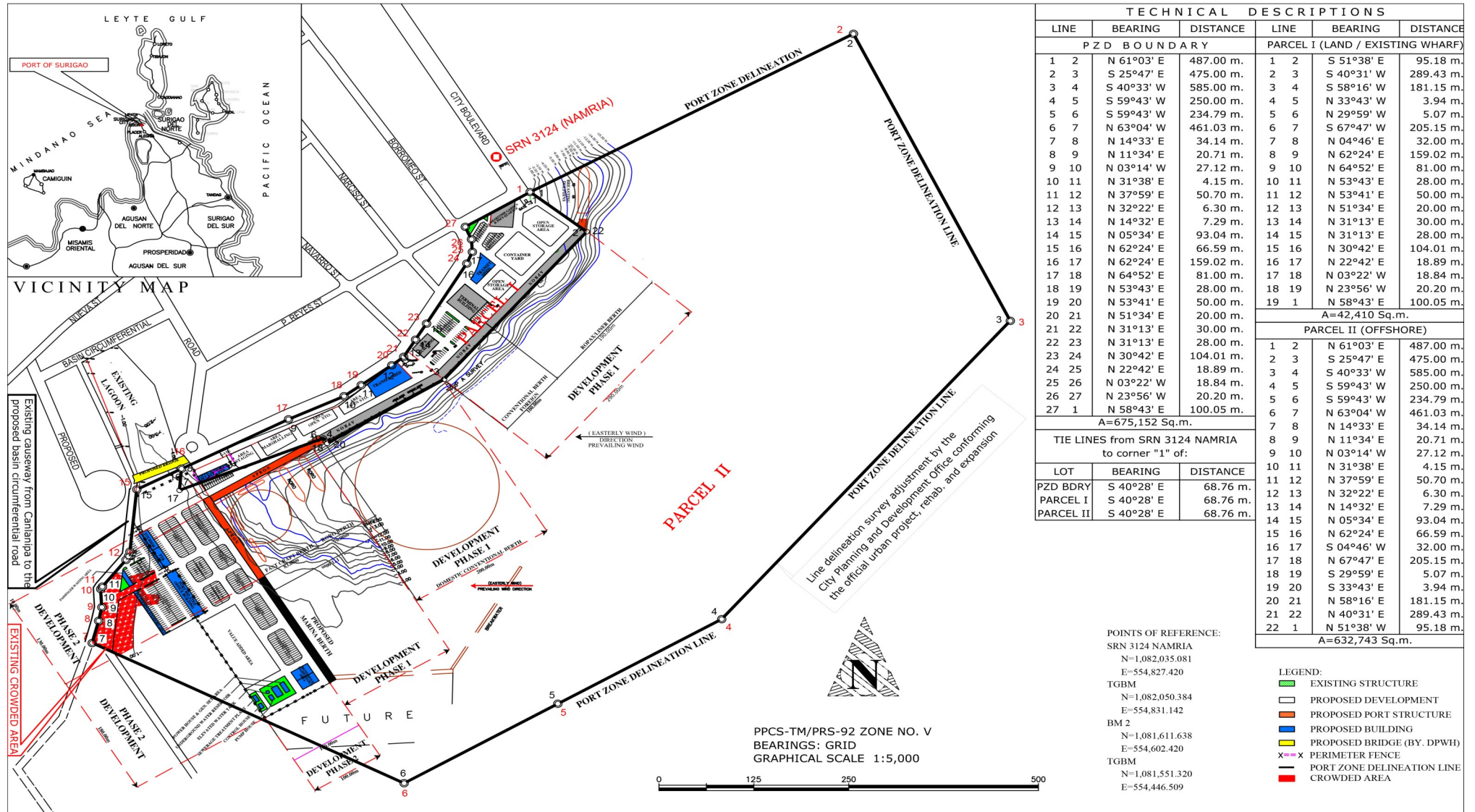
The Port of Surigao is the Baseport of the Port Management Office office of Surigao and is located at Bilang-Bilang Bay in Surigao City, Surigao del Norte and is strategically located at the Northeastern part of Mindanao between  $125^{\circ} 15'$  to  $126^{\circ} 15'$  east longitude and  $9^{\circ}$  to  $10^{\circ} 30'$  north latitude. It is bound on the North and East by the Pacific Ocean, on the South by the Provinces of Agusan del Norte and Surigao del Sur on the West by the Surigao Strait.





# PORT LOCATION:

## A. Port Limits



**B. Total Port Area: 38,916.34 square meters**

**C. Sea Distance:** Around 20 meters from the PMO Administration Building to the harbor waters

**D. Land Access:**

1. National Highway (Borromeo Street) traverses the port
2. Navarro Street intersects with Borromeo Street Leading to Gate no. 4
3. Narciso Street intersects with Borromeo Street Leading to Gate no. 3

**E. Entrance Channel:** Bilang-Bilang Bay

**F. Physical Environment:**

**Topography and Oceanography:**

Surigao City is marked by rolling hills that gently buffers its eastern and western boundaries. To the south-west towers the Kabangkaan Ridge which divides the city from the municipality of San Francisco (formerly Anao-aon). Kinabutan River (otherwise known as Surigao River) meanders Surigao valley before it empties to the Surigao tidal basin, a shrinking mangrove swamp fast overtaken by the city's expansion. It has an average elevation of 19 meters or 65.5 ft. above sea level. The highest elevation on the mainland at the Kabangkaan Ridge has a peak elevation of 465 meters above sea level. Along the border of Tagana-an is Mapawa Peak with an elevation of 245 meters above sea level. Barangays Cabongbongan, Nabago and Capalayan are at the foot of its slopes.

More than two dozen islands and islets make up two fifths of the city's total land area. They are separated from the mainland by Hinatuan Passage, which connects Mindanao Sea to the Pacific Ocean. The largest island of Nonoc is marked by a rusty-red weathering mantle of lateritic nickel ore, visible from any vantage point on the mainland coast. Its highest elevation at 263 meters above sea level typifies most of its hilly terrain. Across the channel at Hikdop Island, the highest point is Mt. Telegrafo at 100.05 meters. Hinatuan Island is similar to Nonoc's bare and rusty-red hilly appearance. Other notable islands of Hanigad, Sibale, Bayaganan and Awasan are generally flat, covered mostly with coconut trees and assorted hardwoods. Large swaths of mangrove and nipa palm forests cover its brackish waterways and shallow fringes of its coastlines.

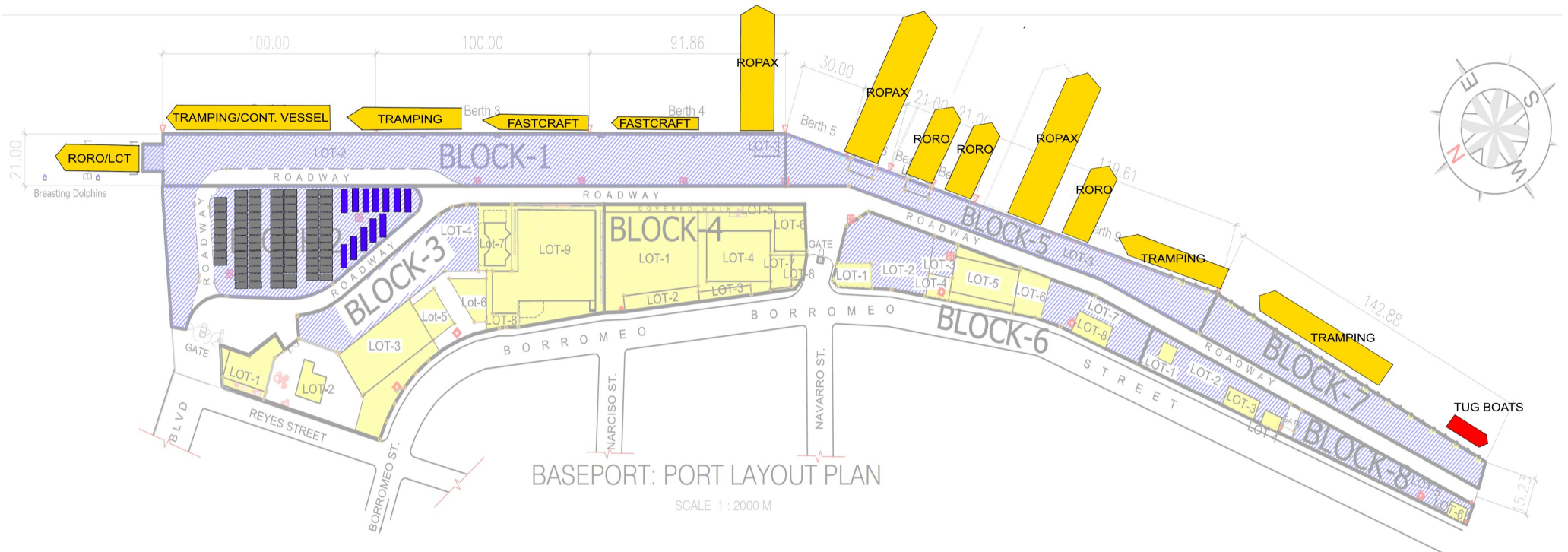
**Meteorology and Climate:**

Surigao del Norte is less frequented by typhoons as shown in the climate map of the Philippines of PAG-ASA, Weather Bureau. But the province is often as a reference point for tropical disturbances entering the country. It has a type II climate characterized by no pronounced dry season with a very pronounced maximum rain period from November to January.

**Seismic Conditions:**

Two (2) active fault lines run parallel along the boundary of the Municipality of San Francisco and Surigao City and traversing along the Arellano District up to the Municipality of Tagana-an. These are the fault zones identified by the PHIVOLCS and the survey conducted by the United Nations Revolving Fund for Natural Exploration (UNRNFRE).

# PORT FACILITIES



## Berth Area Capacity

- A) 13 vessels – 3 ROPAX, 4 RORO, 2 Fast Craft, 4 Tramping Vessels.
- B) Or 12 vessels – 3 ROPAX, 4 RORO, 2 Fast Craft, 2 Tramping, and 1 Container Vessels.

Container Yard Capacity : 200 TEUs – 100 TEUs Laden and 100 TEUs Empty Vans

Roro Marshalling Yard : 12 units 10-Wheeler Truck

Container Yard/Marshalling Area : 4,257.18 sq.m.

Cargo Handling Equipment: Five (5) Forklifts: One (1) 2.5 tonner, two (2) 3.5 tonner, One (1) 6 tonner and one (1) 25 toner.

## C. Other Port Facilities:

1. Rubber dock fenders
2. Maintenance Repair Workshop: 155.65 sq. meter
3. Power Plant Station: 300 kVA generator set installed in 137.50 square meters power station



## PORT SERVICES

### I. Vessel Services:

- A. Pilotage: Surigao Harbor Pilots Association
- B. Towing/Tugging:
- C. Line Handling: Surigao Port Services
- D. Mooring/Unmooring: Surigao Port Services

### II. Cargo Services Provider: Surigao Port Services

#### Services Offered:

- A. Cargo Checking
- B. Cargo Surveying
- C. Warehousing: Cargo Shed no. 1 - 636.72 square meters; Cargo Shed no. 2 - 1,275 square meters

### III. Passenger Services:

- A. Passenger Terminal Building: 2,167 square meters.
- B. Booking/Ticketing Office:
  - 1. Evaristo Shipping Lines Inc
  - 2. KSJ Shipping Lines Inc.
  - 3. Montenegro Shipping Lines Inc.
  - 4. Starlite Ferries Inc.



**REGISTERED PRIVATE PORTS UNDER BASEPORT SURIGAO'S SUPERVISION**

NAME OF PORT FACILITY & LOCATION	OWNER/OPERATOR	FACILITIES	Main Functions of the Private Port	Nature of Business/ Commodities Handled
1 SURIGAO INTEGRATED RESOURCES CORPORATION /PLATINUM GROUP METALS CORP. , Sitio Inchrome, Cagdianao, Claver, Surigao del Norte	SURIGAO INTEGRATED RESOURCES CORPORATION / PLATINUM GROUP METALS CORP.	1. Causeway 1 - 180m x 8m Causeway/Pier 2. Causeway 2 - 1,100 sq.m.	Loading/Unloading Facility for Deck Cargo (LCT-Type) Ships	Nickel Ore
2 TAGANITO MINING CORPORATION Brgy. Taganito, Claver, Surigao del Norte	TAGANITO MINING CORPORATION	400m x 15m Steel Pier, 95m x 17m Sheet Pile Wharf, 12" dia. Acid Stainless Pipe, 8" dia. Mechanical Steel Pipe, Two (2) sets of 6m x 6m Dolphins, Two (2) sets of 5.32m x 5.41m Light Beacon, Two (2) sets of 20.10m Leading Light, Two (2) sets of 5.23 Lighted Buoy with Lantern, Wharf 1 and 2 <b>NEW FACILITIES</b> - Wharf rectification: 127-Meter length with 8 docking bay; 13.50 meters width of 1 docking bay	Loading/Unloading Facility for Deck Cargo (LCT-Type) Ships	Nickel Ore
3 TAGANITO HIGH PRESSURED ACID LEACH (THPAL), Brgy. Taganito, Claver, Surigao del Norte	TAGANITO HIGH PRESSURE ACID LEACH (THPAL)	Wharf rectification: 127-Meter length with 8 docking bay; 13.50 meters width of 1 docking bay	Loading/Unloading Facility for Deck Cargo (LCT-Type) Ships, Chemical Tankers (sulfuric acid)	Nickel Ore, Sulfuric Acid , mixed nickel – cobalt sulfide
4 HINATUAN MINING CORPORATION, Hinatuan Island, Brgy. Talavera, Tagana-an, Surigao del Norte	HINATUAN MINING CORPORATION	<b>CORTES ROCK CAUSEWAY</b> - 105 sq.m. Beaching Area, Three (3) wooden Mooring Posts, One (1) 50 sq.m. Pier Stockyard, Two (2) Silt Collector Sumps connected to Settling Pond #4 <b>MAGKAHUYOG BEACHING PORT</b> - 105 sq.n. Beaching Area, Three (3) Wooden Mooring Posts, One (1) 50 sq.m. Pier Stockyard, One (1) 1,288sq.m. Collector Sumps connected to Settling Pond #3 <b>SOUTH BEACHING PORT</b> - 187.5 sq.m. Beaching Area, Six (6) wooden Mooring Posts, Two (2) 50 sq.m. Pier Stockyard, One (1) Silt Collector Sumps connected to Settling pond #2	Loading/Unloading Facility for Deck Cargo (LCT-Type) Ships	Nickel Ore



## REGISTERED PRIVATE PORTS UNDER BASEPORT SURIGAO'S SUPERVISION

NAME OF PORT FACILITY & LOCATION	OWNER/OPERATOR	FACILITIES	Main Functions of the Private Port	Nature of Business/ Commodities Handled
5 PACIFIC NICKEL PHILIPPINES, INC (PNPI), Brgy. Talisay, Nonoc Island, Surigao City	PACIFIC NICKEL PHILIPPINES, INC.	One (1) unit Oil Pier, 12.2m x 61.2m, One (1) unit T-shaped Coal Pier, 180m x 25m, Two Mooring Dolphins, Pipelines/Conveyors, Product Warehouse, 119.5m x 280m, Main Warehouse 42.7m x 122.0m <b>PIPELINE/ CONVEYORS</b> - 20" dia. X 600m Bunker C, 12" dia. X 600m Naptha, 10" dia. x 600m Aqua Amonia, 6" dia x 600m Gasoline and Diesel, 48" dia. x 1.2km. Coal Conveyor	Loading/Unloading Facility for Deck Cargo (LCT-Type) Ships	Nickel Ore
6 ADNAMA MINING RESOURCES, INC. (AMRI) (Oriental Synergy Mining Corp.) Taganito, Claver, Surigao del Norte	ADNAMA MINING RESOURCES, INC.		Loading/Unloading Facility for Deck Cargo (LCT-Type) Ships	Nickel Ore

