

PORT OF TANDAG (SURIGAO DEL SUR)

Port Management Office of Surigao

PORT PROFILE:

The Port of Tandag serves as the seat of the Terminal Management Office of Dinagat which supervises ports in the island province. It is located at 10°9'5'1.22"N latitude and 126°11'49.80"E longitude.



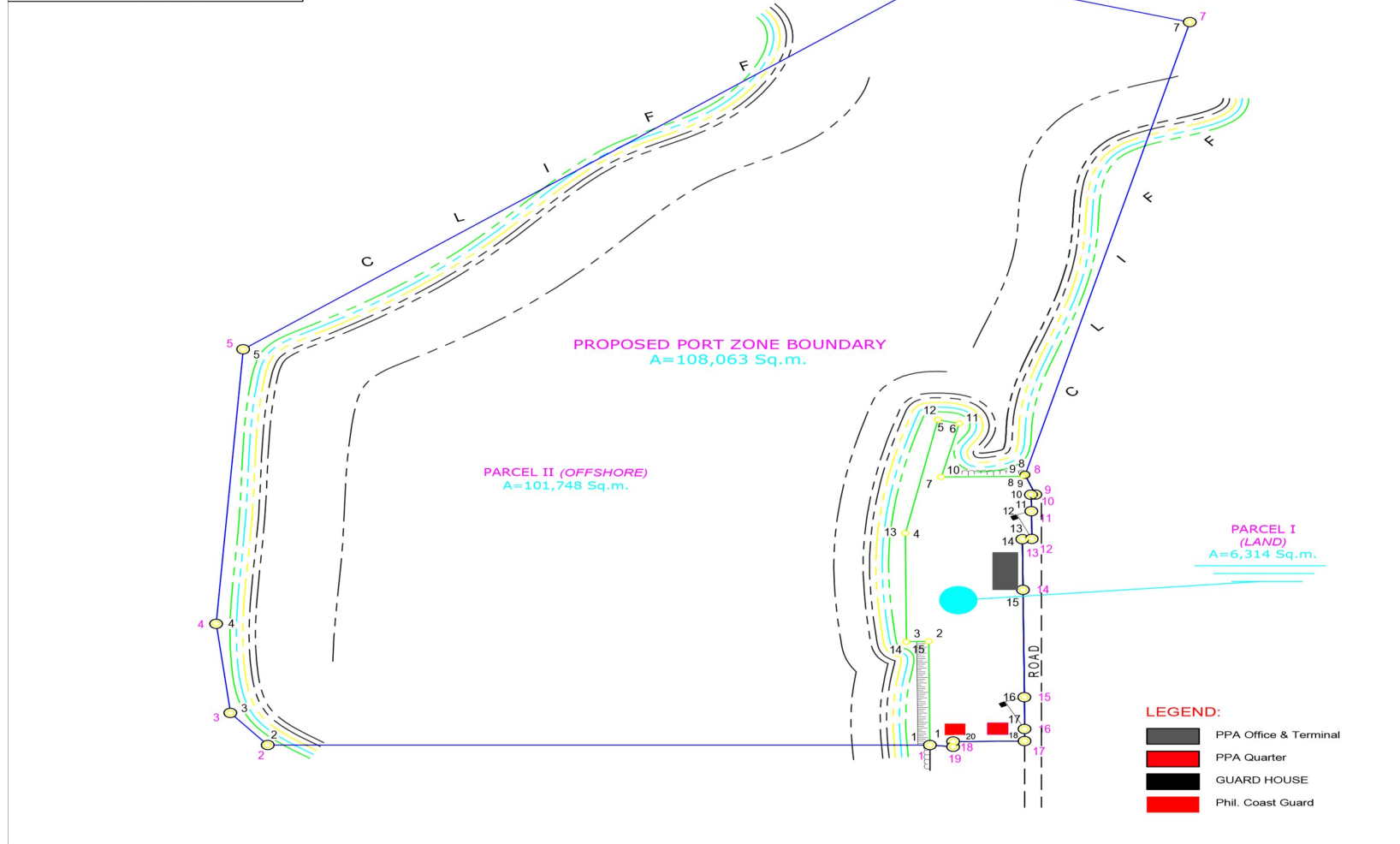
PORT LOCATION:

A. Port Limits

TECHNICAL DESCRIPTIONS			PARCEL I (LAND)				PARCEL II (OFFSHORE)				TIE LINES from BLLM No. 1, CAD 392-D TANDAG CADASTRE to corner "1" of:			
LINE	BEARING	DISTANCE	1	2			1	2				LOT	BEARING	DISTANCE
PZD BOUNDARY														
1	2	DUE WEST	260.00 m.					1	2	DUE WEST	260.00 m.			
2	3	N 40°32' W	22.51 m.	2	3	S 88°38' W	8.83 m.	2	3	N 40°32' W	22.51 m.	PZD BOUNDARY		
3	4	N 06°42' W	47.86 m.	3	4	N 00°22' W	57.93 m.	3	4	N 06°42' W	47.86 m.	PARCEL I (LAND)		
4	5	N 04°09' E	146.87 m.	4	5	N 11°55' E	61.86 m.	4	5	N 04°09' E	146.87 m.	PARCEL II (OFFSHORE)		
5	6	N 53°56' E	340.28 m.	5	6	S 76°20' E	8.59 m.	5	6	N 53°56' E	340.28 m.			
6	7	S 75°00' E	100.00 m.	6	7	S 13°51' W	29.35 m.	6	7	S 75°00' E	100.00 m.			
7	8	S 15°00' W	250.00 m.	7	8	N 89°24' E	32.05 m.	7	8	S 15°00' W	250.00 m.			
8	9	S 21°07' E	11.30 m.	8	9	N 47°51' E	1.15 m.	8	9	S 47°51' W	1.15 m.			
9	10	S 89°01' W	1.75 m.	9	10	S 21°07' E	11.30 m.	9	10	S 89°24' W	32.05 m.			
10	11	S 01°18' E	8.85 m.	10	11	S 89°01' W	1.75 m.	10	11	N 13°51' E	29.35 m.			
11	12	S 00°28' E	14.75 m.	11	12	S 01°18' E	8.85 m.	11	12	N 76°20' W	8.59 m.			
12	13	S 88°00' W	3.73 m.	12	13	S 00°28' E	14.75 m.	12	13	S 11°55' W	61.86 m.			
13	14	S 00°35' E	27.00 m.	13	14	S 88°00' W	3.73 m.	13	14	S 00°22' E	57.93 m.			
14	15	S 00°35' E	57.27 m.	14	15	S 00°35' E	27.00 m.	14	15	N 88°38' E	8.83 m.			
15	16	S 00°03' E	16.98 m.	15	16	S 00°35' E	57.27 m.	15	1	S 00°27' E	55.27 m.			
16	17	S 00°27' E	6.42 m.	16	17	S 00°03' E	16.98 m.	A=101,748 Sq.m.						
17	18	S 89°28' W	28.06 m.	17	18	S 00°29' E	6.42 m.							
18	19	S 00°33' E	2.80 m.	18	19	S 89°27' W	28.06 m.							
19	1	N 84°09' W	9.22 m.	19	20	S 00°33' E	2.80 m.							
A=108,063 Sq.m.			A=6,314 Sq.m.											



PPCS-TM/PRS-92 ZONE NO. V
BEARINGS: GRID
GRAPHICAL SCALE 1:1,000



B. Total Port Area: 4,261 square meters

C. Sea Distance: Around 10 meters from the TMO Tandag Building to the harbor waters

D. Land Access: Main gate is connected by Serra street leading towards the city población.

E. Entrance Channel: Pacific Ocean leading towards Twin Linungaw Cove which serves as the port's turning basin.

F. Physical Environment:

Topography and Oceanography:

Surigao del Sur is located along the northeastern coast of Mindanao facing the Philippine Sea between 125°40' to 126°20' east longitudes and 7°55' and 9°20' north latitudes. It is bounded on the northwest by the province of Surigao del Norte, on the southeast by Davao Oriental, on the west and southwest by Agusan del Norte and Agusan del Sur.

Situated west is the Diwata Mountain Range, isolating the province from the rest of Mindanao. To the east lies the Philippine Sea. The Mindanao Deep, one of the deepest trenches in the world, is situated a few kilometers east of the coastline.

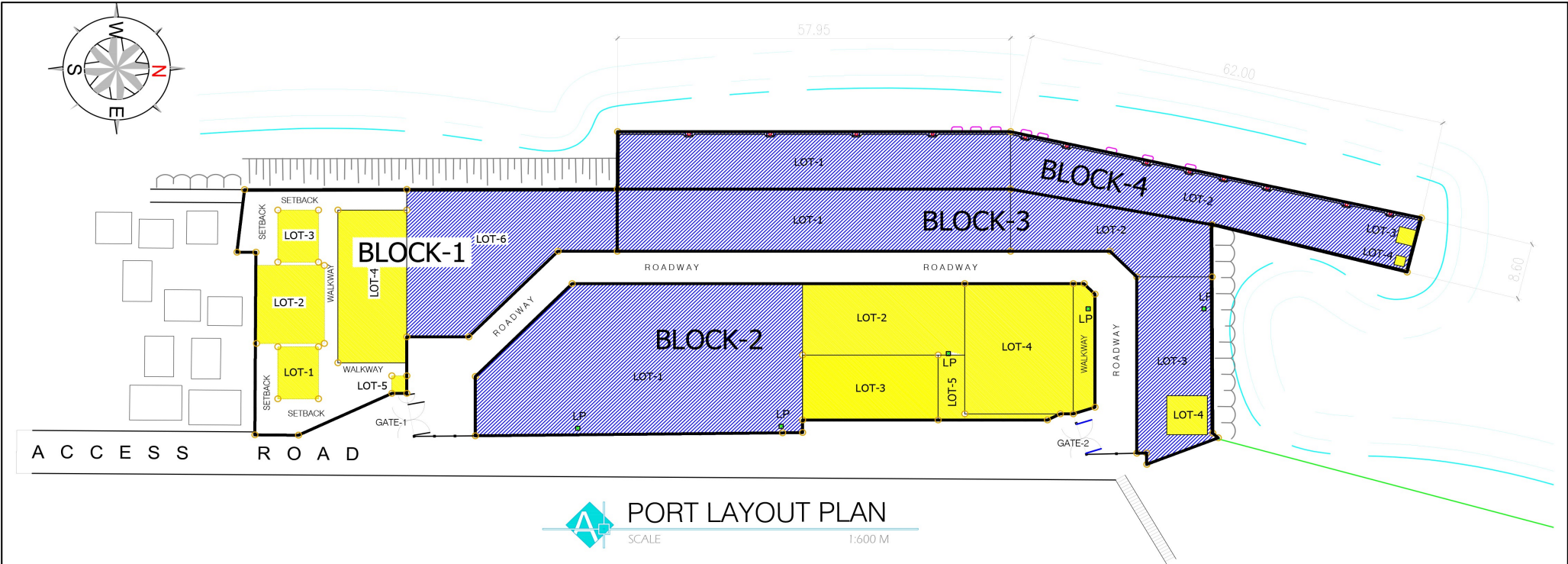
Lining the Southwestern boundary of the province is the Diwata Range and has irregular coastlines and boundary lines on the east and on the west, respectively. About 16.30 percent of the total land area of the province consists of highlands and mountains. The hilly land constitutes the biggest area, about 45.77 percent of the total land area of the province. The upland covers about 16.0 percent while lowland represents about 21.28 percent of the total land area.

The general shape of the province is elongated extending from the northeastern part of Carrascal to the southernmost Municipality of Lingig. It is approximately 300 kilometers in length and 50 kilometers in its widest stretch which runs from Cagwait to San Miguel

Meteorology and Climate:

The province falls under Type II [climate of the Philippines](#), characterized by rainfall distributed throughout the year, although there is a distinct rainy season which begins from the month of November and ends in March. However, the climatic behavior of the province for the past few years has shown variations wherein the onset of the rainy seasons no longer occurs on the usual time. Months with low rainfall are from July to October with September as the driest month. Wet months are from November to June with January as the wettest month.

PORT FACILITIES



BLOCK-1

Total Land Area = 1,307.47m²

- LOT-1: TMO Quarters = 48m²
- LOT-2: Landscaped Area = 120m²
- LOT-3: PCG Office = 48m²
- LOT-4: Parking Area = 238.55m²
- LOT-5: Guard House = 5m²
- LOT-6: Open Storage Area = 502.38m²
- Setbacks/Walkways = 345.54m²

BLOCK-2

Total Land Area = 1,909.04m²

- LOT-1: Open Storage Area = 1011.35m²
- LOT-2: Parking Area = 262.79m²
- LOT-3: Terminal Management Office/PTB = 200.56m²
- LOT-4: Cargo Shed = 320.90m²
- LOT-5: Power House = 39.36m²
- Setbacks/Walkways = 74.08m²

BLOCK-3

Total Land Area = 1,108.02m²

- LOT-1: Open Storage Area = 553.25m²
- LOT-2: Open Storage Area = 253.67m²
- LOT-3: Open Storage Area = 265.1m²
- LOT-4: Tsunami Detector = 36m²

BLOCK-4

Total Land Area = 1,006.60m²

- LOT-1: Apron = 511.83m²
- LOT-2: Apron = 486.27m²
- LOT-3: Tsunami Detector = 6.25m²
- LOT-4: Tide Station/NAMRIA = 2.25m²

Total Area of all Blocks = 5,331.13m²

Total Area of Road Network = 982.87m²

Total Land Area = 6,314.00m²

Legend:

- Operations Area
- Commercial/Support Facility

PORT OF TANDAG, SURIGAO DEL SUR

PORT SERVICES

I. Vessel Services:

- A. Pilotage: Surigao Harbor Pilots Association
- C. Line Handling: Apollo Arrastre and Stevedoring Services
- D. Mooring/Unmooring: Apollo Arrastre and Stevedoring Services

II. Cargo Services Provider: Apollo Arrastre and Stevedoring Services

Services Offered:

- A. Cargo Checking
- B. Cargo Surveying

III. Terminal Management Office: 200.56 square meters



REGISTERED PRIVATE PORTS UNDER THE TERMINAL MANAGEMENT OFFICE OF TANDAG

NAME OF PORT FACILITY & LOCATION	OWNER/OPERATOR	FACILITIES	Main Functions of the Private Port	Nature of Business/ Commodities Handled
1 MARC VENTURES MINING & DEVELOPMENT CORP., Brgy. Bon-ot, Carrascal, Surigao del Sur	MARC VENTURES MINING & DEVELOPMENT CORP.	100 m x 25.495 m Causeway	Loading/Unloading Facility of LCT-type Deck Cargo Vessels	Nickel Ore
2 CARRASCAL NICKEL CORPORATION, Carrascal, Surigao del Sur	CARRASCAL NICKEL CORPORATION	20m x 70m Causeway		Nickel Ore
3 CTP CONSTRUCTION & MINING CORPORATION, Brgys. Adlay and Dahican, Carrascal, Surigao del Sur	CTP CONSTRUCTION & MINING CORPORATION	Sitio Parang-Parang, Brgy. Adlay - 55m x 12.5m Rock causeway, 60m x 20m T-Pier, 510m x 100m Causeway, Two (2) Settling Ponds Sitio Capaguihan, Brgy. Dahican - 104m x 60m Causeway		Nickel Ore
4 VTP MINING & CONSTRUCTION, INC., Kaayongan, adlay, Carrascal, Surigao del Sur	VTP MINING & CONSTRUCTION, INC.	150.06m x 63.14m Causeway facility, 872.64m 12.1m Road Network		Nickel Ore