

PORT OF CANTILAN (SURIGAO DEL SUR)

Port Management Office of Surigao
Terminal Management Office of Tandag

PORT PROFILE:

The Port of Cantilan is located at Barangay Consuelo, Cantilan, Surigao Del Sur with coordinates at Latitude: 9°22'46.86" and Longitude: 125°59'17.21". It primarily serves the town of Cantilan which is the second northernmost municipality of CarCanMadCarLan (Carrascal, Cantilan, Madrid, Carmen and Lanuza) and also the second northernmost municipality of the province of Surigao del Sur.



PORT LOCATION:

A. Port Limits

TECHNICAL DESCRIPTION AREA = 4,440.26 sq.m. PARCEL 1 (LAND)

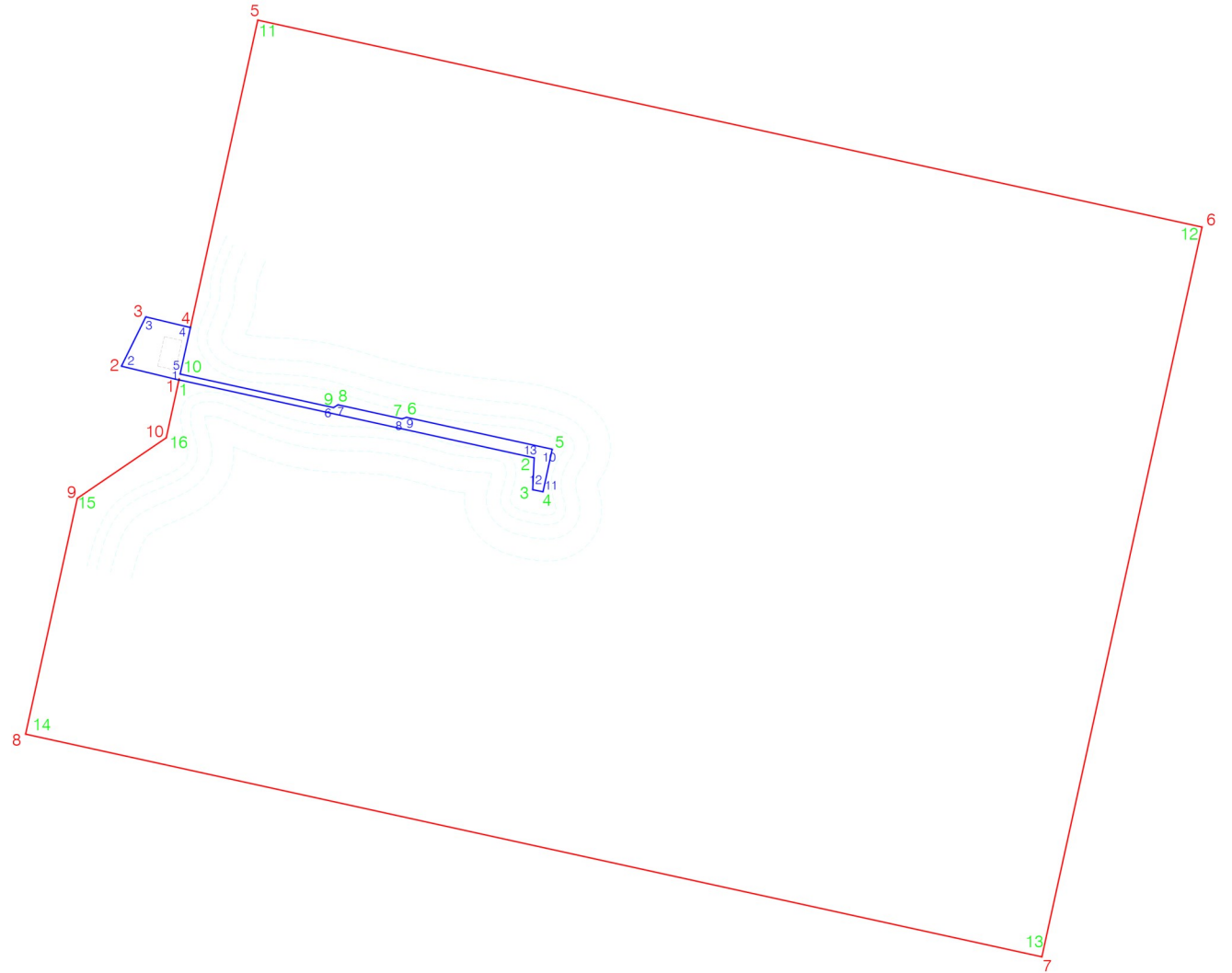
LINES	BEARING	DISTANCE
1 - 2	N76 26'W	48.95m
2 - 3	N26 23'E	45.46
3 - 4	S76 26'E	37.90
4 - 5	S12 22'W	39.28
5 - 6	S77 38'E	130.00
6 - 7	N56 56'E	4.31
7 - 8	S77 37'E	54.21
8 - 9	N72 52'E	4.00
9 - 10	S77 38'E	123.44
10 - 11	S12 22'W	36.06
11 - 12	N77 53'W	8.72
12 - 13	N02 45'E	26.43
13 - 1	N77 38'W	305.17

TECHNICAL DESCRIPTION AREA = 506,531.72 sq.m. PARCEL 2 (OFFSHORE)

LINES	BEARING	DISTANCE
1 - 2	S77 38'E	305.17m
2 - 3	S02 45'W	26.43
3 - 4	S77 53'E	8.72
4 - 5	N12 22'E	36.06
5 - 6	N77 38'W	123.44
6 - 7	S72 52'W	4.00
7 - 8	N77 37'W	54.21
8 - 9	S56 56'W	4.31
9 - 10	N77 38'W	130.00
10 - 11	N12 22'E	300.00
11 - 12	S77 38'E	800.00
12 - 13	S12 22'W	618.75
13 - 14	N77 38'W	861.08
14 - 15	N12 22'E	200.00
15 - 16	N55 43'E	89.04
16 - 1	N12 22'E	50.00

TECHNICAL DESCRIPTION TOTAL AREA = 511,113.83 sq.m. PROPOSED PORT ZONE

LINES	BEARING	DISTANCE
1 - 2	N76 20'W	48.95m
2 - 3	N26 23'W	45.46
3 - 4	S76 26'E	37.90
4 - 5	N12 22'E	254.67
5 - 6	S77 38'E	800.00
6 - 7	S12 22'W	618.75
7 - 8	N77 38'W	861.08
8 - 9	N12 22'E	200.00
9 - 10	N55 43'E	89.04
10 - 1	N12 22'E	50.00



B. Total Port Area: 4,261 square meters

C. Sea Distance: Around 10 meters from the Port of Cantilan Building to the harbor waters

D. Land Access: Main gate is connected by Consuelo Access Road leading to the Surigao del Sur National Highway.

E. Entrance Channel: Pacific Ocean leading towards Lanuza Bay.

F. Physical Environment:

Topography and Oceanography:

Surigao del Sur is located along the northeastern coast of Mindanao facing the Philippine Sea between 125°40' to 126°20' east longitudes and 7°55' and 9° 20' north latitudes. It is bounded on the northwest by the province of Surigao del Norte, on the southeast by Davao Oriental, on the west and southwest by Agusan del Norte and Agusan del Sur.

Situated west is the Diwata Mountain Range, isolating the province from the rest of Mindanao. To the east lies the Philippine Sea. The Mindanao Deep, one of the deepest trenches in the world, is situated a few kilometers east of the coastline.

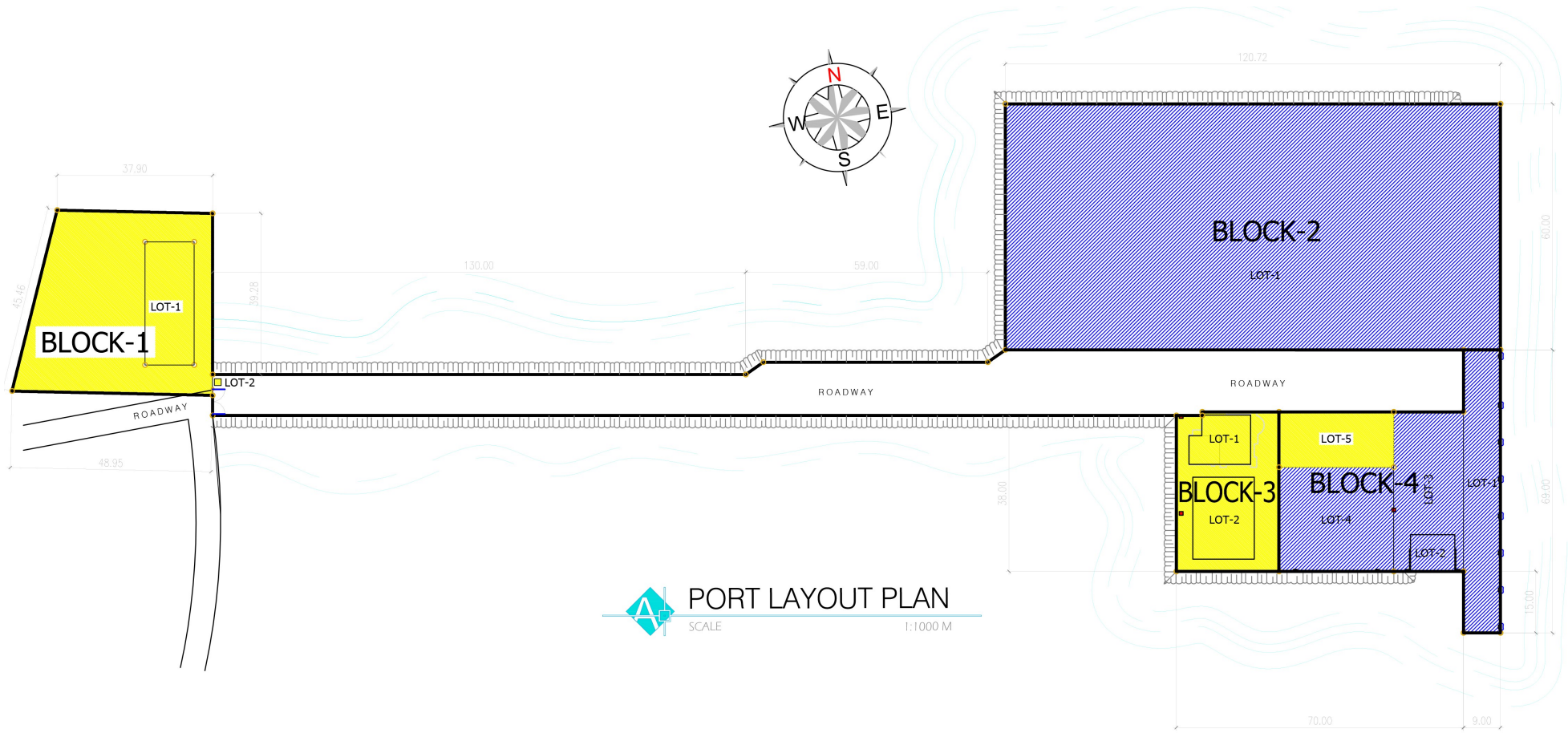
Lining the Southwestern boundary of the province is the Diwata Range and has irregular coastlines and boundary lines on the east and on the west, respectively. About 16.30 percent of the total land area of the province consists of highlands and mountains. The hilly land constitutes the biggest area, about 45.77 percent of the total land area of the province. The upland covers about 16.0 percent while lowland represents about 21.28 percent of the total land area.

The general shape of the province is elongated extending from the northeastern part of Carrascal to the southernmost Municipality of Lingig. It is approximately 300 kilometers in length and 50 kilometers in its widest stretch which runs from Cagwait to San Miguel

Meteorology and Climate:

The province falls under Type II [climate of the Philippines](#), characterized by rainfall distributed throughout the year, although there is a distinct rainy season which begins from the month of November and ends in March. However, the climatic behavior of the province for the past few years has shown variations wherein the onset of the rainy seasons no longer occurs on the usual time. Months with low rainfall are from July to October with September as the driest month. Wet months are from November to June with January as the wettest month.

PORT FACILITIES



PORT LAYOUT PLAN
SCALE 1:1000 M

BLOCK-1
Total Land Area = 5,749.18m²
 LOT-1: Cargo-Shed = 1,924.35m²
 Building = 360m²
 Setback = 1,564.35m²
 LOT-2: Guard House = 2.7m²
 Roadway = 3,822.13m²

BLOCK-2
LOT-1: Open Storage Area = 7,270.97m²

BLOCK-3
Total Land Area = 966.85m²
 LOT-1: Field Office/PTB = 165m²
 LOT-2: Cargo Shed = 300m²
 Setbacks = 501.85m²

BLOCK-4
Total Land Area = 2,371.51m²
 LOT-1: Apron = 621m²
 LOT-2: Roro Ramp = 97.2m²
 LOT-3: Ramp/Marshalling Area = 564.1m²
 LOT-4: Open Storage Area = 711.21m²
 LOT-5: Parking Area = 378m²

Total Area of all Blocks = 16,358.51m²
Total Land Area = 16,358.51m²

- Legend:**
- Operations Area
 - Commercial/Support Facility

PORT SERVICES

I. Vessel Services:

A. Pilotage: Surigao Harbor Pilots Association

C. Line Handling: Prudential Customs Brokerage Services Inc. (PCBSI)

D. Mooring/Unmooring: Prudential Customs Brokerage Services Inc. (PCBSI)

II. Cargo Services Provider: Prudential Customs Brokerage Services Inc. (PCBSI)

Services Offered:

A. Cargo Checking

B. Cargo Surveying

III. Cantilan Field Office: 200.56 square meters

