

PORT OF ARAS-ASAN (SURIGAO DEL SUR)

Port Management Office of Surigao
Terminal Management Office of Tandag

PORT PROFILE:

The Port of Aras-asan is an all-weather port at Barangay Bitaugan West and secured by the natural protection of Arangasa Islands. The port was constructed by the National Irrigation Administration in the early 80s to serve as loading/unloading docks for various equipment under for its irrigation projects. It was eventually turned over to the PPA in the early 90s. The port is strategically located at 8°52'34.51" latitude and Longitude: 126°18'52.64"



PORT LOCATION:

A. Port Limits



SCALE 1:5000 M

LEGEND:

- GUARD HOUSE
- C H B FENCE
- WIRE FENCE

TECHNICAL DESCRIPTIONS

PROPOSED PORT ZONE		
LINE	BEARING	DISTANCES
1 - 2	N 41d 22' W	23.01m
2 - 3	N 47d 01' W	132.33m
3 - 4	N 47d 00' W	78.64m
4 - 5	N 57d 52' W	144.96m
5 - 6	N 45d 00' E	750.00m
6 - 7	S 45d 00' E	939.65m
7 - 8	S 45d 00' W	772.34m
8 - 9	N 36d 07' W	334.70m
9 - 10	N 40d 50' W	93.49m
10 - 11	N 36d 21' W	42.26m
11 - 12	S 68d 18' W	17.90m
12 - 13	N 88d 55' W	16.92m
13 - 14	N 49d 52' W	21.02m
14 - 15	N 39d 47' W	20.69m
15 - 16	N 15d 50' W	27.05m
16 - 1	N 8d 25' W	17.89m

TIE LINE FROM B.L.L.M. #19,
Pls - 786 to corner-1,
S 16d 46' E, 4,711.10m

AREA = 686,114 SQ.M.

PARCEL 1 (LAND)		
LINE	BEARING	DISTANCES
1 - 2	N 55d 27' E	8.62m
2 - 3	N 46d 29' E	78.22m
3 - 4	N 42d 32' E	99.04m
4 - 5	N 14d 32' E	1.95m
5 - 6	N 45d 30' E	10.44m
6 - 7	S 58d 44' E	0.33m
7 - 8	S 46d 35' E	80.83m
8 - 9	S 43d 13' E	9.09m
9 - 10	S 46d 38' W	80.70m
10 - 11	S 41d 30' E	0.35m
11 - 12	S 46d 40' W	72.38m
12 - 13	S 33d 45' E	34.05m
13 - 14	S 51d 32' W	17.70m
14 - 15	N 36d 21' W	42.26m
15 - 16	S 68d 18' W	17.90m
16 - 17	N 88d 55' W	16.92m
17 - 18	N 49d 52' W	21.02m
18 - 19	N 39d 47' W	20.69m
19 - 20	N 15d 50' W	27.05m
20 - 1	N 8d 25' W	17.89m

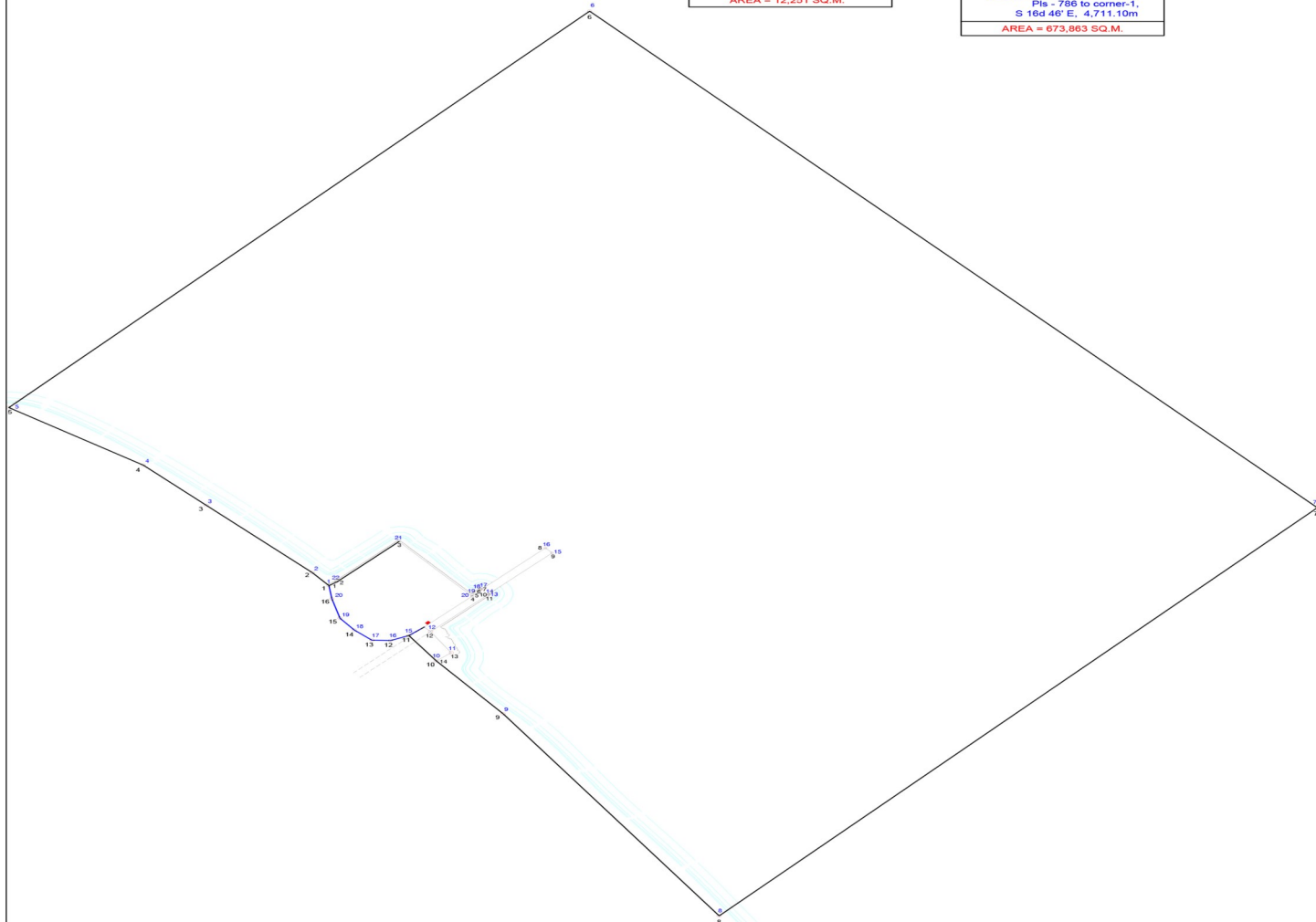
TIE LINE FROM B.L.L.M. #19,
Pls - 786 to corner-1,
S 16d 46' E, 4,711.10m

AREA = 12,251 SQ.M.

PARCEL 2 (OFFSHORE)		
LINE	BEARING	DISTANCES
1 - 2	N 41d 22' W	23.01m
2 - 3	N 47d 01' W	132.33m
3 - 4	N 47d 00' W	78.64m
4 - 5	N 57d 52' E	144.96m
5 - 6	N 45d 00' E	750.00m
6 - 7	S 45d 00' E	939.65m
7 - 8	S 45d 00' W	772.34m
8 - 9	N 36d 07' W	334.70m
9 - 10	N 40d 50' W	93.49m
10 - 11	N 51d 32' E	17.70m
11 - 12	N 33d 45' W	34.05m
12 - 13	N 46d 40' E	72.38m
13 - 14	N 41d 30' W	0.35m
14 - 15	N 46d 38' E	80.70m
15 - 16	N 43d 13' W	9.09m
16 - 17	S 46d 35' W	80.83m
17 - 18	N 58d 44' W	0.33m
18 - 19	S 45d 30' W	10.44m
19 - 20	S 14d 32' W	1.95m
20 - 21	N 42d 32' W	99.04m
21 - 22	S 46d 29' W	78.22m
22 - 1	S 55d 27' W	8.62m

TIE LINE FROM B.L.L.M. #19,
Pls - 786 to corner-1,
S 16d 46' E, 4,711.10m

AREA = 673,863 SQ.M.



B. Total Port Area: 11,559.58 square meters

C. Sea Distance: Around 10 meters from the Field Office Building to the harbor waters

D. Land Access: Main gate is connected by Aras-asan Access Road leading to the Surigao del Sur National Highway.

E. Entrance Channel: Pacific Ocean leading towards the bay of Arangasa Island.

F. Physical Environment:

Topography and Oceanography:

Surigao del Sur is located along the northeastern coast of Mindanao facing the Philippine Sea between 125°40' to 126°20' east longitudes and 7°55' and 9° 20' north latitudes. It is bounded on the northwest by the province of Surigao del Norte, on the southeast by Davao Oriental, on the west and southwest by Agusan del Norte and Agusan del Sur.

Situated west is the Diwata Mountain Range, isolating the province from the rest of Mindanao. To the east lies the Philippine Sea. The Mindanao Deep, one of the deepest trenches in the world, is situated a few kilometers east of the coastline.

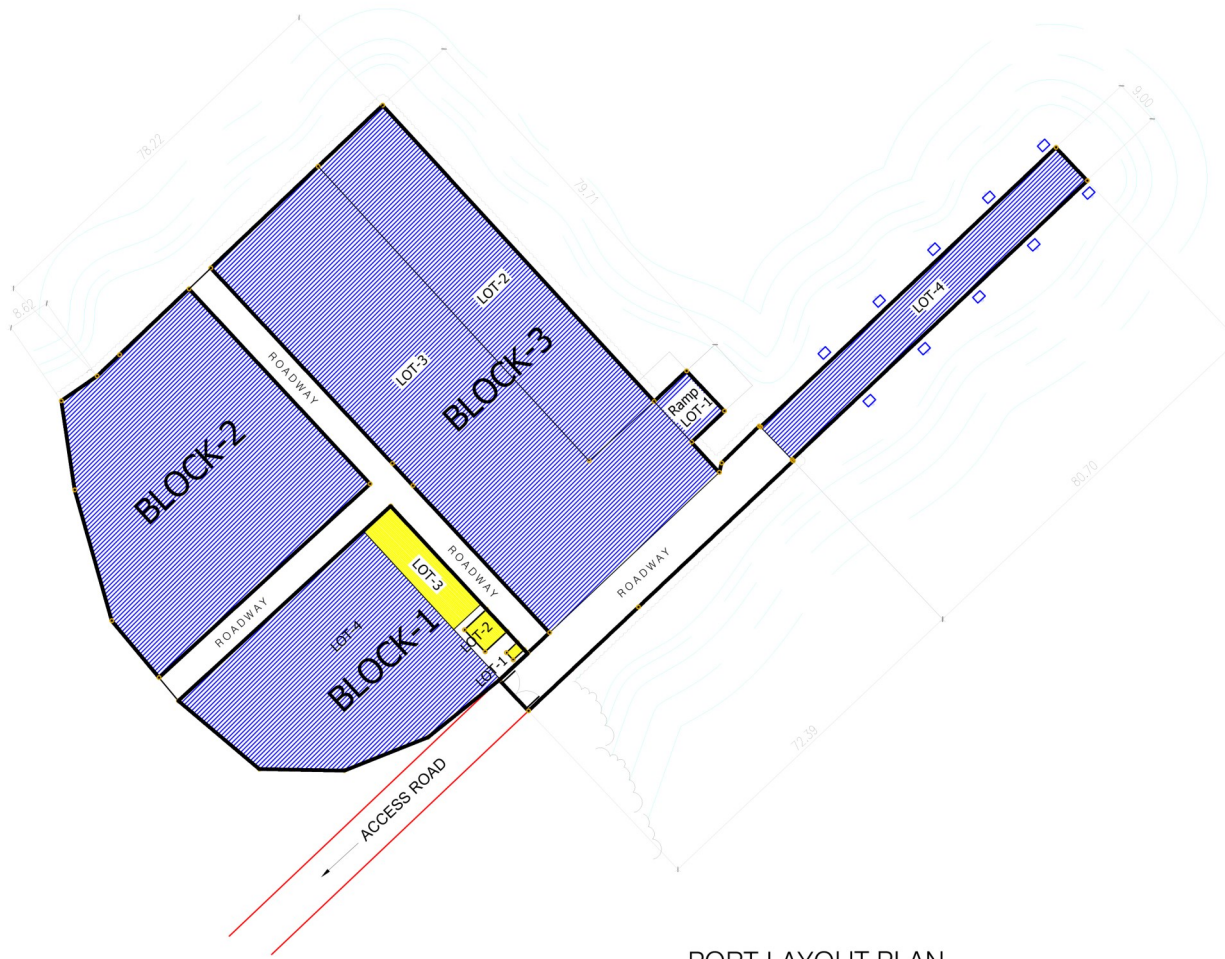
Lining the Southwestern boundary of the province is the Diwata Range and has irregular coastlines and boundary lines on the east and on the west, respectively. About 16.30 percent of the total land area of the province consists of highlands and mountains. The hilly land constitutes the biggest area, about 45.77 percent of the total land area of the province. The upland covers about 16.0 percent while lowland represents about 21.28 percent of the total land area.

The general shape of the province is elongated extending from the northeastern part of Carrascal to the southernmost Municipality of Lingig. It is approximately 300 kilometers in length and 50 kilometers in its widest stretch which runs from Cagwait to San Miguel

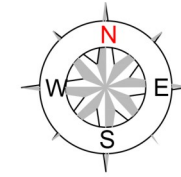
Meteorology and Climate:

The province falls under Type II [climate of the Philippines](#), characterized by rainfall distributed throughout the year, although there is a distinct rainy season which begins from the month of November and ends in March. However, the climatic behavior of the province for the past few years has shown variations wherein the onset of the rainy seasons no longer occurs on the usual time. Months with low rainfall are from July to October with September as the driest month. Wet months are from November to June with January as the wettest month.

PORT FACILITIES



PORT LAYOUT PLAN



BLOCK-1

Open Storage Area = 1,971.78m²

- LOT-1: Guard House = 6m²
Setbacks = 59.21m²
- LOT-2: PPA Field Office = 36m²
- LOT-3: Parking Area = 196.70m²
- LOT-4: Open Storage Area = 1,673.87m²

BLOCK-2

Open Storage Area = 2,581.92m²

BLOCK-3

Total Land Area = 6,070.15m²



- LOT-1: Ro-ro Ramp = 98.08m²
- LOT-2: Apron = 1,401.59m²
- LOT-3: Open Storage Area = 3,213.83m²
Roadway = 630.35m²
- LOT-4: RC Pier = 726.30m²

Total Area of all Blocks = 10,623.85m²

Total Area of Road Network = 935.73m²

Total Land Area = 11,559.58m²

Legend:

-  Operations Area
-  Commercial/Support Facility

PORT OF ARAS-ASAN, CAGWAIT, SURIGAO DEL SUR

PORT SERVICES

I. Vessel Services:

- A. Pilotage: Surigao Harbor Pilots Association
- C. Line Handling: Northeastern Mindanao Handlers and Forwarders Inc. (NEMHFI)
- D. Mooring/Unmooring: Northeastern Mindanao Handlers and Forwarders Inc. (NEMHFI)

II. Cargo Services Provider: Northeastern Mindanao Handlers and Forwarders Inc. (NEMHFI)

Services Offered:

- A. Cargo Checking
- B. Cargo Surveying

III. Aras-asan Field Office: 200.56 square meters

