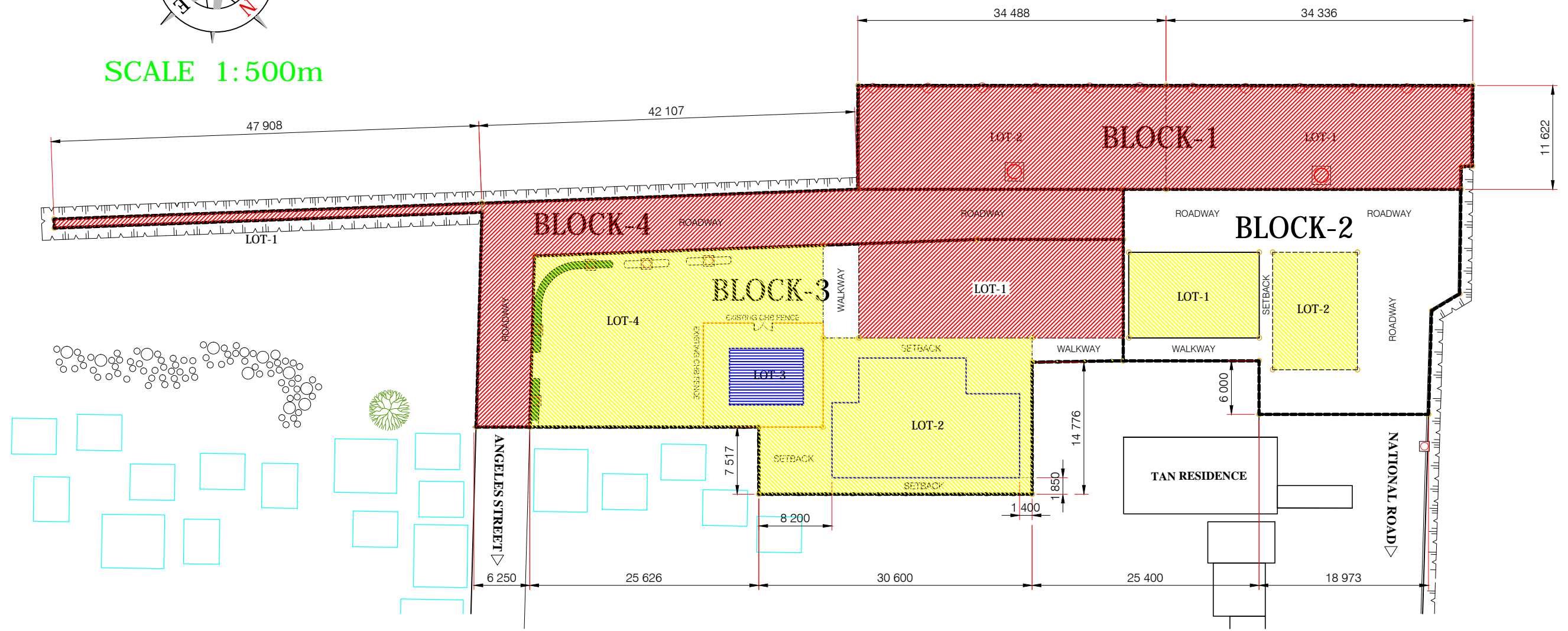


SCALE 1:500m



BLOCK-1
 Total Land Area = 796.53m²
 LOT-1: Wharf Area = 396.41m²
 LOT-2: Wharf Area = 400.12m²

BLOCK-2
 Total Land Area = 816.90m²
 LOT-1: Cargo Shed = 140.16m²
 LOT-2: Parking Area = 124.79m²
 Setbacks/Roadway = 551.95m²

BLOCK-3
 Total Land Area = 1,498.30m²
 LOT-1: Open Storage Area = 323.19m²
 LOT-2: Passenger Terminal = 463.34m²
 Building = 242.40m²
 Setback = 220.94m²
 LOT-3: PPA Field Office = 156.11m²
 Building = 48m²
 Setback = 108.11m²
 LOT-4: Green Area = 487m²
 Walkways = 68.66m²

BLOCK-4
 Total Land Area = 589.84m²
 LOT-1: Causeway = 47.50m²
 Roadway = 542.34m²
 Total Area of all Blocks = 3,701.57m²

Total Land Area = 3,701.57m²

- Legend:
- Operations Area
 - Support Facility
 - Commercial Area (None)
 - Administration Building

PORT LAND USE SCHEME

PORT OF DEL CARMEN, SIARGAO IS., SURIGAO DEL NORTE